

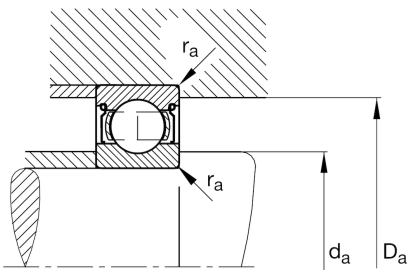
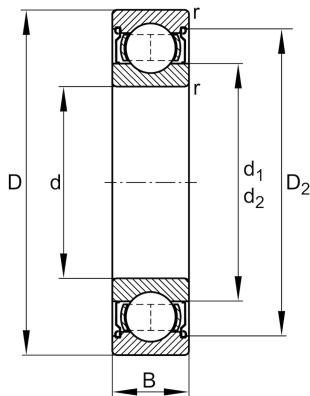
FAG

**61805-2Z**

Deep groove ball bearing

Schaeffler ID:  
0555172340000Deep groove ball bearing 618.-2Z, single  
row, shields, steel sheet metal cage

## Technical information

**Main Dimensions & Performance Data**

d	25 mm	Bore diameter
D	37 mm	Outside diameter
B	7 mm	Width
$C_r$	4.300 N	Basic dynamic load rating, radial
$C_{0r}$	2.940 N	Basic static load rating, radial
$C_{ur}$	132 N	Fatigue load limit, radial
$n_G$	24.000 1/min	Limiting speed
$n_{gr}$	13.900 1/min	Reference speed
	20 g	Weight

**Dimensions**

$r_{min}$	0,3 mm	Minimum chamfer dimension
$D_2$	34,2 mm	Caliber diameter outer ring
$d_1$	28,2 mm	Shoulder diameter inner ring

**Mounting dimensions**

$d_{a min}$	27 mm	Minimum diameter shaft shoulder
$D_{a max}$	35 mm	Maximum diameter of housing shoulder
$r_{a max}$	0,3 mm	Maximum fillet radius

**Calculation factors**

$f_0$	16	Calculation factor
-------	----	--------------------

**Temperature range**

$T_{min}$	-30 °C	Operating temperature min.
$T_{max}$	120 °C	Operating temperature max.